

Institute of Social and Economic Research (ISER)

Jennifer Schmidt
October 25th, 2017



UAA Institute of Social
and Economic Research
UNIVERSITY of ALASKA ANCHORAGE

Who and What is ISER???

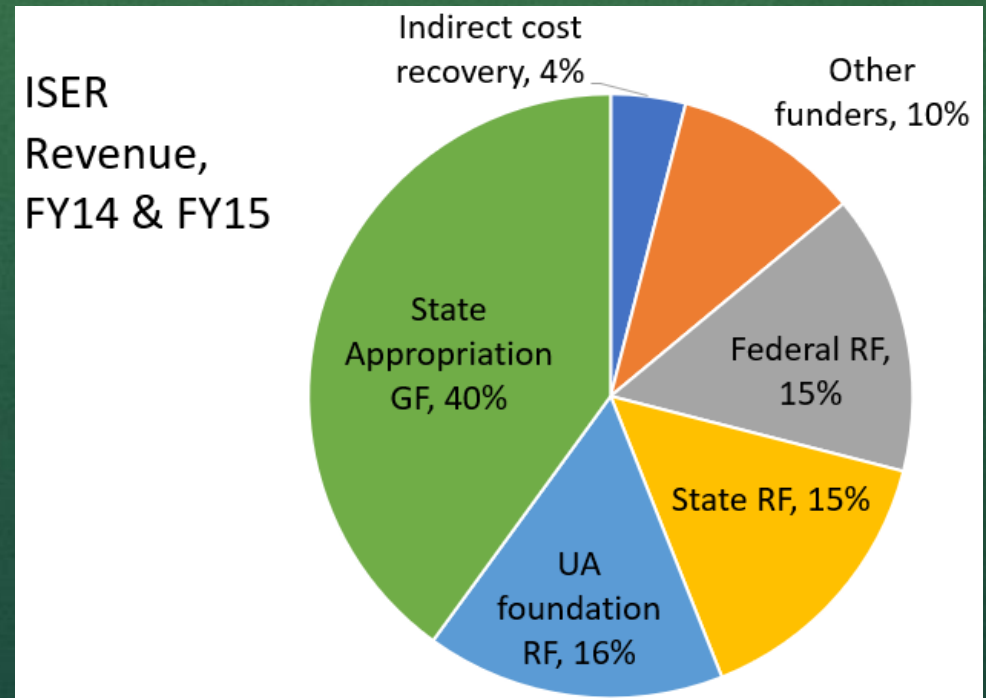
- Located at the University of Alaska Anchorage
- Established in 1961 by the Alaska Legislature
- ISER generates over 75% of its own budget

Who and What is ISER???

- Located at the University of Alaska Anchorage
- Established in 1961 by the Alaska Legislature
- ISER enhances the well-being of Alaskans and others, through non-partisan research that helps people understand social and economic systems and supports informed public and private decision-making.
 - Focusing attention on critical economic and social issues in Alaska, the Arctic, and similar regions
 - Engaging in basic and applied research leading to better understanding of those issues
 - Disseminating knowledge through publications and other media, community involvement, public service, and teaching

Funding

- In 2017 ISER generated over 75% of its own budget
- General funds from the state are down from previous years



What kind of projects do we work on?



Examples of ISER products

- Publications
 - <http://www.iser.uaa.alaska.edu/publications.php>

Attitudes towards land use and development in the Mat-Su:

Empirical evidence on economic values of ecosystem services

**Process Evaluation
of the Mat-Su JOBS
Teen Parent Demonstration Project**

**Mat-Su Borough in 1980s and Beyond
(Research Summary No. 44)**

**Economic Importance of Sportfishing
in the Matanuska-Susitna Borough**

How Much Residents Would Pay for the Change^b

Fully restore salmon runs	\$54 million
Maintain current salmon numbers	\$27 million
Keep existing and add more farmland	\$34 million
Keep existing farmland	\$28 million
Expand access to recreation ^c	\$22 million
Protect current access	\$20 million
Encourage <i>local</i> professional jobs	\$3 million
Encourage <i>local</i> resource-extraction jobs	-\$16 million
Very fast population growth: 270,000 residents by 2040	-\$33 million



collaborations

- ISER is partnering with research Behavioral Health Research and Services (CBHRS)
- Find out how to make screening and counseling conversations about alcohol use as routine as talking about blood pressure and weight. Focus is primarily the Mat-Su Valley.
- ISER component is to understand how broader implementation of routine conversations about alcohol use could affect Alaska's economy and public health.

ISER collaborations



- ISER is partnering with the Alaska Center for Energy and Power (ACEP)
- ISER has been involved in energy research for several decades and data collected through ACEP can be used to better understand energy costs and the effect this has on Alaska's economy and residents.

How could you use ISER products?

- Use past information to predict future growth, energy costs, land use, etc.
- Make informed policy decisions such as where to allocate money
- Get more funding
- Answer questions residents might ask

MATANUSKA-SUSITNA BOROUGH MAYOR'S BLUE RIBBON TASK FORCE ON POLICE POWERS

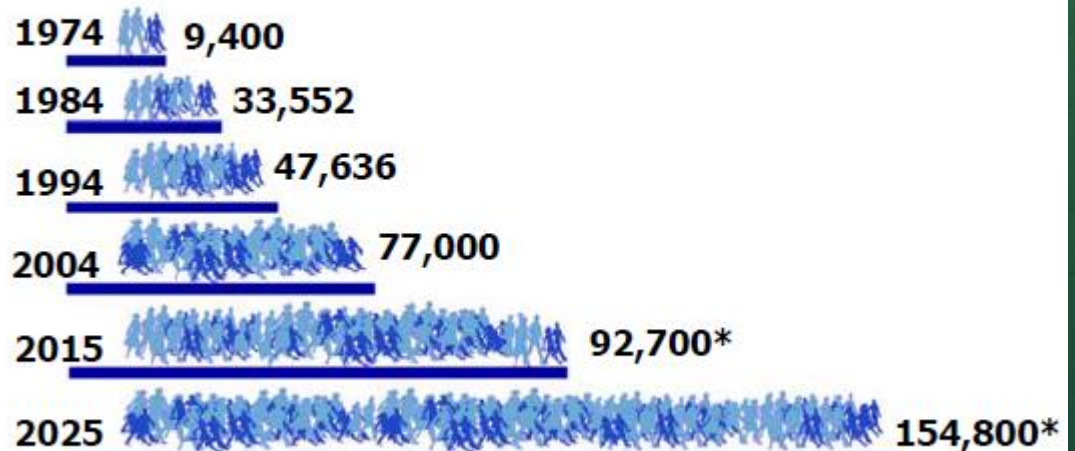
MATANUSKA-SUSITNA BOROUGH

Planning and Land Use Department

350 East Dahlia Avenue • Palmer, AK 99645

Phone (907) 745-9850 • Fax (907) 745-9876

Mat-Su Borough Popula-



*Projected population based on ISER figures

Palmer taking on infrastructure improvements

Highway, sewer, airport top the list

By CHRIS FORD Frontierman.com Aug 19, 2017 0

HATCHER PASS SKI RESORT PHASE 1

ECONOMIC SIGNIFICANCE

Phase 1 construction will also require upgrading the Hatcher Pass road, extension of power, communications, and natural gas, and construction of on-site water and sewage disposal systems. The total cost for infrastructure development is estimated to be approximately \$6.5 million. Since funds have already been allocated to upgrade the Hatcher Pass road at a cost of about \$4 million, the remaining infrastructure expenditures are estimated to be \$2.478 million.

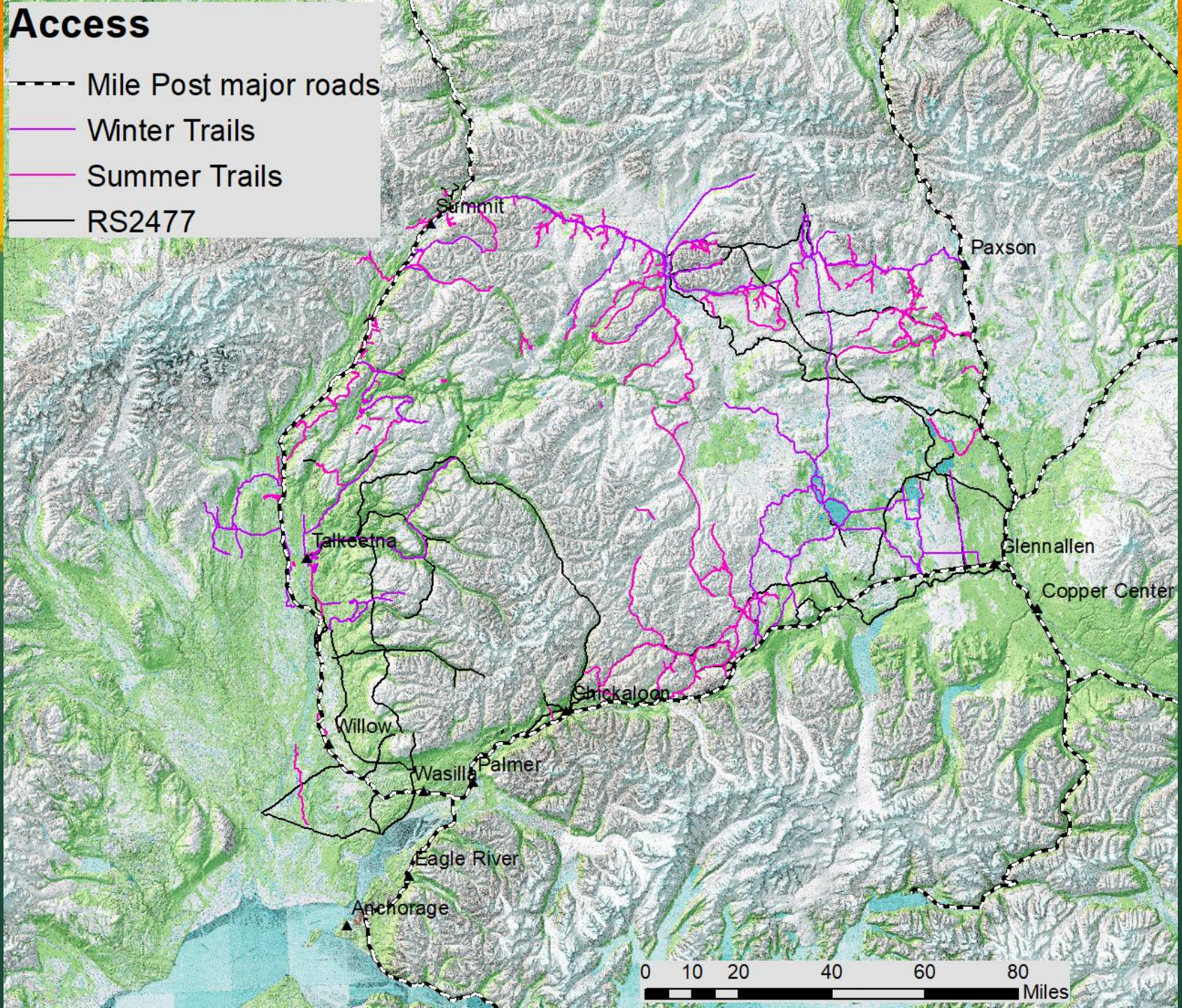
We estimate that expenditure of \$2.478 million on infrastructure development for Phase 1 of the Hatcher Pass Ski Resort would directly result in 14 man-years of employment and \$.630 million in payroll. These jobs will be concentrated in construction and utilities. Since most of the

Data challenges???

- Rescuing past data
- Proprietary issues
- Privacy issues
- Ownership and documenting sources
- Updating data that is ongoing in its data collection

Access

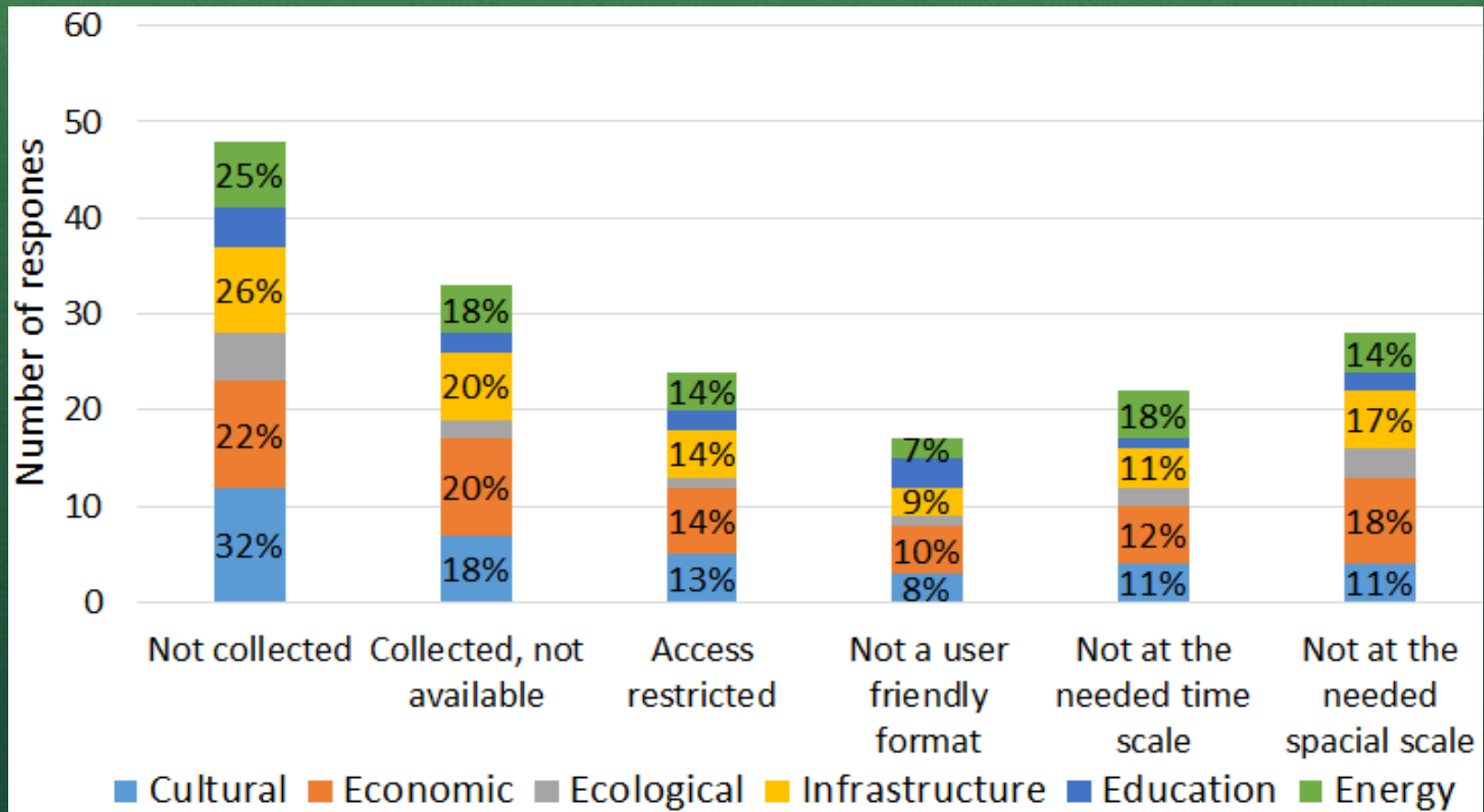
- Mile Post major roads
- Winter Trails
- Summer Trails
- RS2477



Data challenges???

- Rescuing past data
- Proprietary issues
- Privacy issues
- Updating data that is ongoing in its data collection
- **Serving data in a usable and desirable format**
- **So many scattered sources of data**

Workshop in November: Reasons given for why community data is not available by data type



Data challenges???

- Rescuing past data
- Proprietary issues
- Privacy issues
- Updating data that is ongoing in its data collection
- Serving data in a usable and desirable form
- So many scattered sources of data
- **Sustainable funding**

THINK: Do these issues sound familiar?

How can we work together???

- Communicating what data is needed and why
- Reduce duplication of data collection
- Have data portals or websites with data “talk” to each other
- Work together to build projects that provide data or answer questions that interest funders