



Life. Technology. Together.

# GIS MAPPING SYSTEM

Sierra Alcantra

Records Management Supervisor

# The MSB and MOA Project



# Ideas created a vision

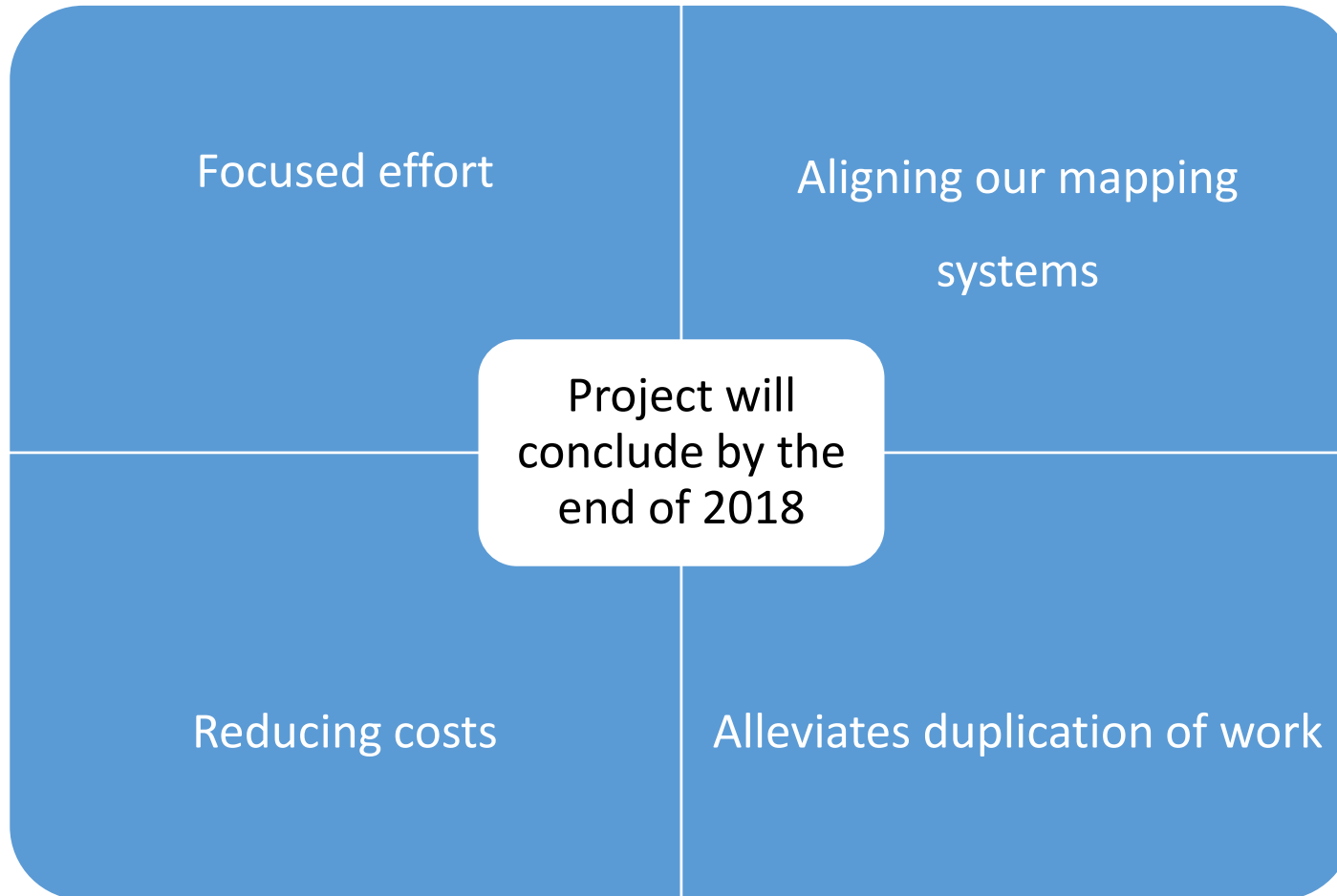
Incorporating data into our records brings together facility alignment

Regulatory reporting of data allows us to accurately certify reports and meet requirements

Consistent with census data



# Vision becomes reality



# Relationships established

Collaboration  
with MSB &  
MOA

Focused on  
internship  
opportunities

New  
relationships  
formed with  
Denali  
Borough

# New Relationship Opportunities

Denali Borough –  
Update GIS data

Merge our data  
together to create  
efficiencies

- Connectivity
- Create a unified front

Standardize  
addressing

- 911 / EMS systems
- Public Safety

# Size of Denali Borough

12,777  
sq. miles



80  
highway  
miles

~1,900  
residents





Life. Technology. Together.

# Outside Plant and Reducing Transportation Engineering Costs

Robbie Nash

Engineering & Construction Manager



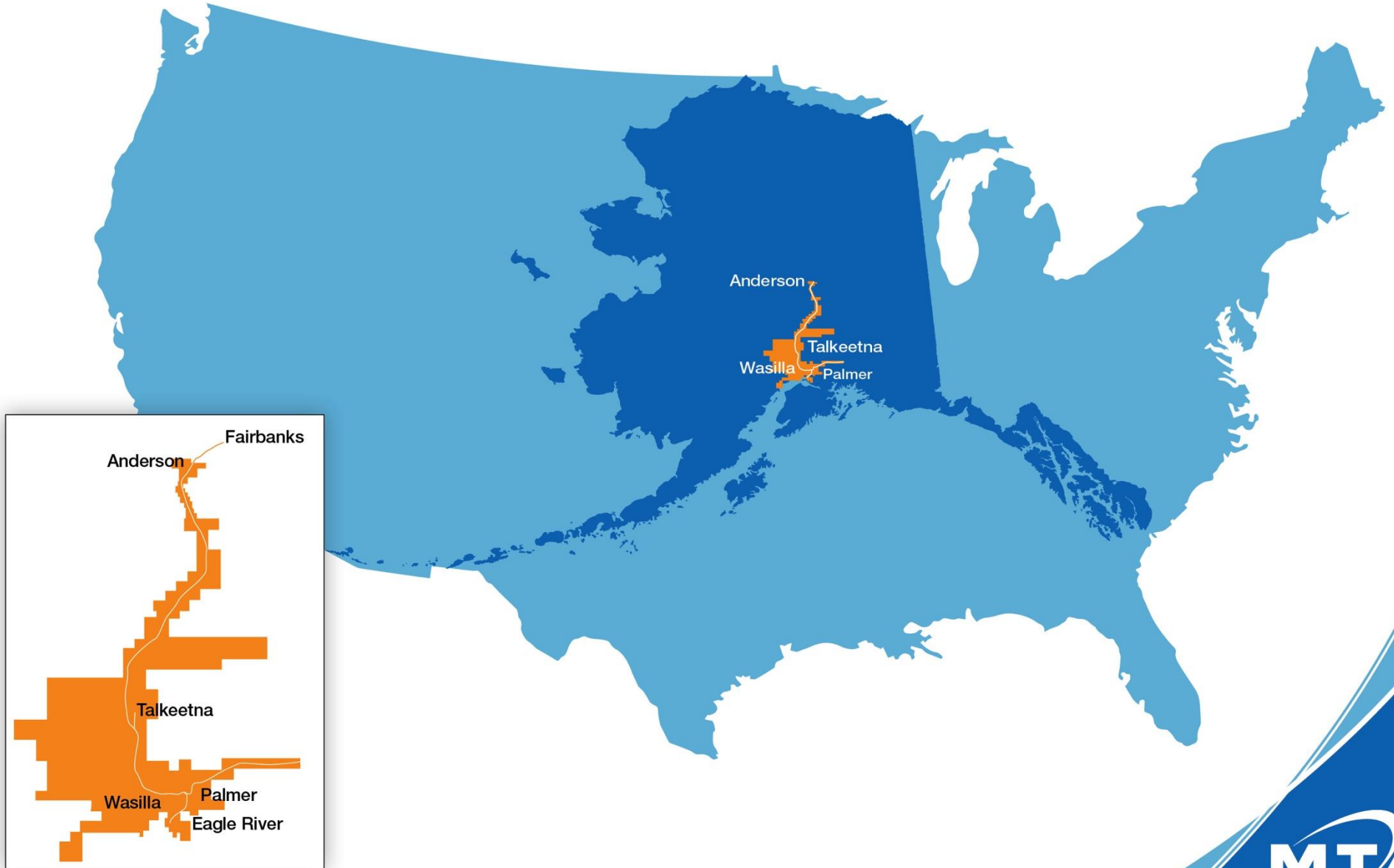
# A look at the past



# A look at the past



# How big is MTA's service area?



# Current OSP Engineering methods

All government agencies have different processes for sharing data. Usually these processes vary within the same agency.

Various Agencies submit information requests to MTA ranging from PDF documents to AutoCAD drawings.

MTA completes information requests on a *PDF format* using redlines and returns to organization. PDF increases margin of error due to static format.



# Current methods

Some facility information requests come in the form of AutoCAD drawings. MTA converts these drawings via an FME workbench into our current Mapcom M4 system to overlay our facilities in the project area. This is then converted back into AutoCAD and sent back to requesting Agency.

Organization enters into plans – determines need for new info.

Repetitive process continues until plans are confirmed accurate.



# 2013 – 280 work orders

4 – drafters

7 – outside  
plant engineers

2018 – 490 work orders

10 engineers



Life. Technology. Together.



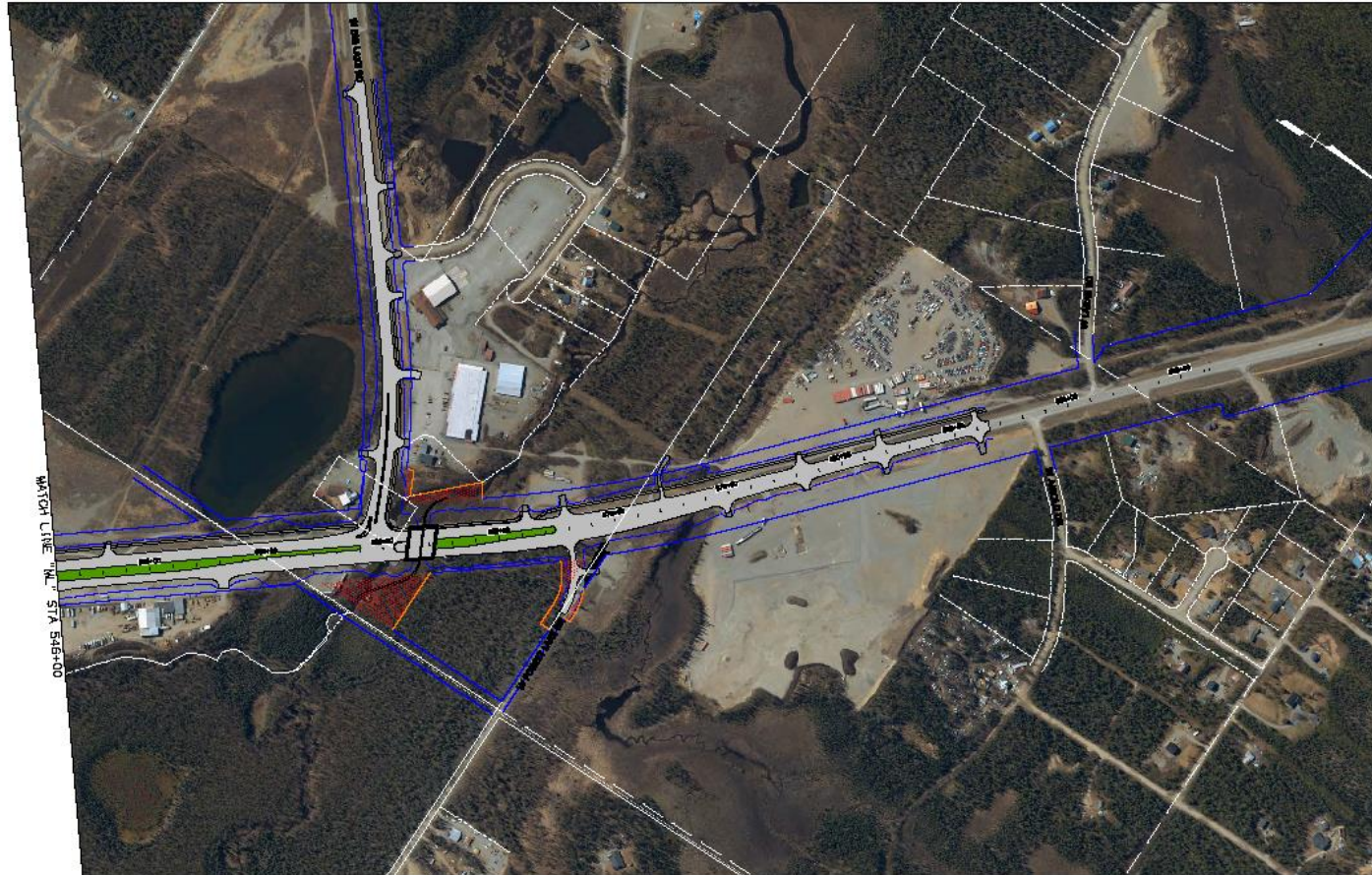
# Drone usage



Drone being used to get Strand over Jackass Canyon



# Parks Highway project Church Road to Big Lake



\\parks\GIS\Projects\48.6-52.3\Reconstruction\Pitman\_Road\_to\_Big\_Lake\_Road\072023\03\_2023\Map\_Series\Map\_Series.mxd

### Legend

- Proposed Right-of-Way
- Existing Right-of-Way
- Railroad Right-of-Way
- Proposed Toe of Cut
- Proposed Toe of Fill

PRELIMINARY

# Parks Highway Re-alignment





# Parks Highway Re-alignment



# Parks Highway Re-alignment



# The future – possible information sharing

Increase  
project  
efficiency



Reduce  
highway  
project  
construction  
costs



Collective  
effort with  
other utility  
companies  
to deliver  
accurate  
data

# Collaborative data sharing

Ensure confidentiality of facilities – route information only

Possible access by locate system

High level of security